

LOCKED LIQUOR CABINET

7-ELEVEN
 STORE # 18226
 675 PAULARINO AVENUE
 COSTA MESA, CA 92626-3039

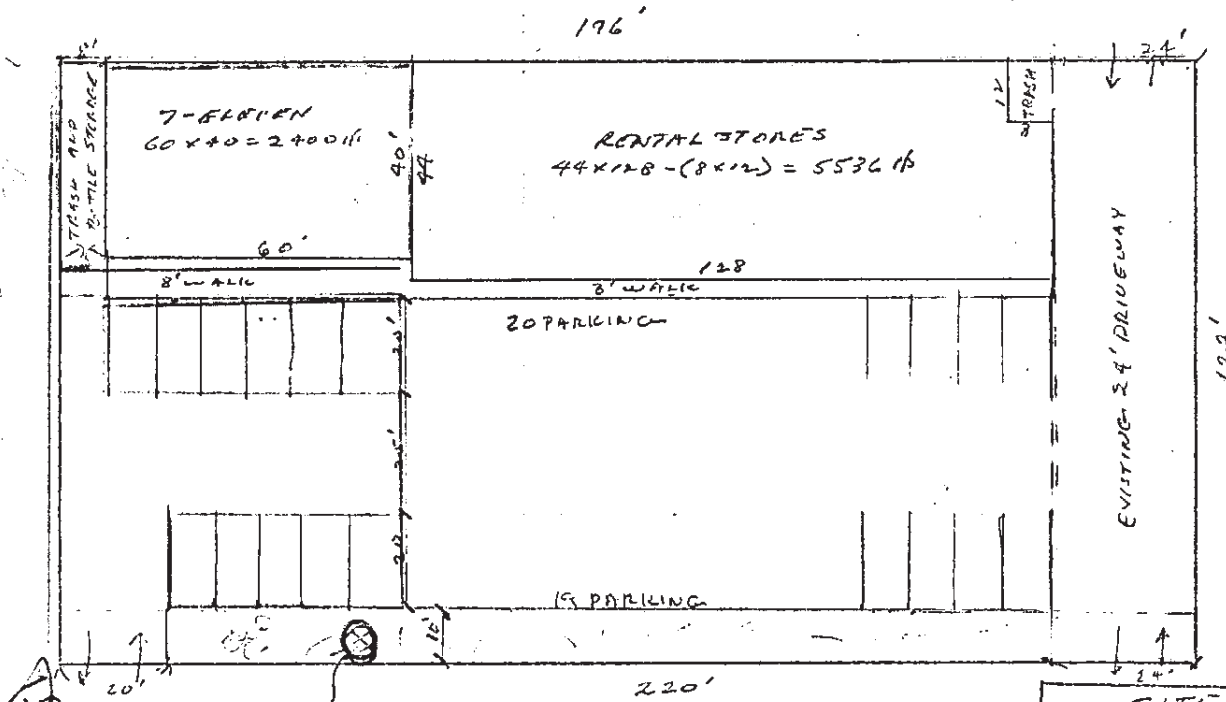
Revisions	
Verify By	AJC
Drawn	EBC
Scale	3/16" = 1'-0"
Date	10/18/2002
Sheet	1 of 1
ROYSTON	
Drawing Number	18226FP

DISCLAIMER
 THIS IS NOT A LEGAL DOCUMENT.
 INTENT IS TO SHOW CURRENT
 EQUIPMENT CONDITIONS.

1" = 30' SCL
REV - 3/75



NOTE: 24' DRIVE EASEMENT



SITE SUMMARY	
SITE AREA	26,540 sq ft
BLDG AREA	7,936 sq ft
SITE/ALDG RATIO	3.38 To 1
PARKING	39
PARKING REQ'D	54
PARKING RATIO	1 car / 1,037 sq ft

APPROVED BY: SELLER/LESSOR
SCALE:

APPROVED BY: BUYER/LESSEE

DRAWING OF PREMISES AND IMPROVEMENTS - PLOT PLAN

LOCATION OF PROPERTY:
PAULARINO NEAR BRISTOL, COSTA MESA, CALIFORNIA

SCHEDULE 3

DATE: [] APPROVED BY: []

DATE: [] SHEET: []

DATE: [] APPROVED BY: []

DATE: [] APPROVED BY: []

DATE: [] APPROVED BY: []

DATE: [] APPROVED BY: []

DATE: [] APPROVED BY: []