

TRAFFIC MEMORANDUM - TRIP GENERATION STUDY

From: Farid Naguib <fnaguib@intueor.net>
Sent: Wednesday, March 29, 2023 9:26 AM
To: Tony Torres
Cc: Fr. Paul Mikhail; Bassem Barsoum
Subject: Saint Monica Church - Draft Trip Generation Study Technical Memorandum
Attachments: Saint Monica Church Trip Generation Study 2023-03-28.pdf

Hi Tony.

I hope you are doing well. Attached for your review and transmittal to the City is the Trip Generation Study concluding that representative/similar Coptic churches in the Orange County area have an average weekday daily trip rate of about 2.44 trips per 1,000 sq. ft.

Please also note that this study shows the average trip generation rate for church only activities, and excludes any daycare activities. Also, note that based on the City of Costa Mesa's Transportation Impact Analysis Guidelines, a traffic study is triggered and needed once a development generates 50 or more vehicle trips during a peak hour. Currently, the church only activities do not generate that level of peak hour vehicle trips, so a traffic study will not be required.

Best regards,
Farid
(949) 351-6653 – mobile

TO: City of Costa Mesa Transportation Services Division

CC: Fr. Paul Mikhail and Bassem Barsoum (Saint Monica Coptic Orthodox Church)
Tony Torres (Visioneering Studios Architecture, Inc.)

FROM: Farid Naguib and Wahid Farhat (Intueor Consulting, Inc.)

DATE: March 28, 2023

SUBJECT: Saint Monica Coptic Orthodox Church in Costa Mesa
Trip Generation Study

This technical memorandum presents the methodology and results of a trip generation study that was performed for use in estimating potential daily trips (and associated trip rates) that may be generated by the proposed Saint Monica Coptic Orthodox Church, located at 234, 236, and 238 Fischer Avenue in the City of Costa Mesa, California. Trip generation is the process of estimating the amount of traffic a proposed new development will generate, once it is built and operational, during a typical weekday. The Institute of Transportation Engineers (ITE) publishes the “Trip Generation Manual” for use in determining trip generation rates for various land uses. The typical weekday daily trip rates for Churches (ITE Land Use Code 560), published in the ITE Trip Generation Manual, is based on an average national condition for a small sample size. The average national condition is also based on trips generated by churches of various denominations, which are predominantly located in the eastern part of the United States. In addition, the sites were surveyed in the 1980s through the 2000s. As a result, these published trip rate predictions may not specifically represent the current trip generation characteristics of Coptic churches in Southern California, and specifically in Orange County. To more accurately reflect local trip making characteristics of Coptic churches in the Orange County area of Southern California, a trip generation study based on similar local Coptic churches was conducted. The study identified representative Coptic church sites in Orange County with similar operating characteristics and collected 24-hour daily traffic counts entering and leaving the driveways of each facility on typical weekdays (Tuesday, Wednesday, or Thursday), and typical weather conditions, when schools are in session and outside the influence of any public holidays or non-typical special event days.

1.0 DATA COLLECTION

For purposes of this trip generation study, three representative local Coptic church sites in the Orange County area were identified to collect daily traffic count information. The following three Coptic churches were selected for this study:

- 1- Saint Gregory American Coptic Orthodox Church
1617 West La Palma Avenue
Anaheim, CA 92801
- 2- Saint Paul American Coptic Orthodox Church
18802 Bardeen Avenue
Irvine, CA 92612
- 3- Saint Verena and the Three Holy Youth Coptic Orthodox Church
491 North Hewes Street
Orange, CA 92869

At each church site, 24-hour bidirectional traffic counts (tube counts) were collected at the entrances and/or exits on typical weekdays (Tuesday, Wednesday, or Thursday) and typical weather conditions, when schools are in session and outside the influence of any public holidays or non-typical special event days. In addition, the square footage (size) of each church building was obtained. In general, a church building houses an assembly hall or sanctuary and it may also include meeting rooms and classrooms.

Initially, 24-hour tube counts were performed for four consecutive weekdays (Tuesday through Friday), during the week of January 23, 2023, at the driveways of each church site to count daily traffic entering and leaving the site. The tube counts were supplemented by a manual one day video count on Wednesday, January 25, 2023, to evaluate the accuracy of the tube count data. As a result of this data comparison, it was determined that the tube counts were inaccurate and unreliable due to several factors including tube tampering, short driveway lengths that resulted in vehicles stopping on the tubes when exiting/entering, and vehicles passing over the tubes at an angle resulting in double counting. Consequently, only the manual one day video count taken on Wednesday, January 25, 2023, was deemed reliable and used. Subsequently, a second typical weekday was selected and a second manual one day video count was performed on Thursday, February 23, 2023, at the driveways of each church site to count daily traffic entering and leaving the site.

2.0 TRIP GENERATION ANALYSIS

The manual traffic count data was collected at the entrances and/or exits of each church site and the results were reviewed for consistency and reasonableness. The detailed count results are presented in the attached Appendix. The daily typical weekday trips at each church site are presented in Table 1. The daily trip rate per 1,000 square feet (sq. ft.) was calculated by dividing each day's daily trips by the thousand square footage (TSF) of each church site to get a typical weekday daily trip rate per TSF. The resulting daily trip rates were averaged over the church sites to get an overall average typical weekday daily trip rate per 1,000 sq. ft. for similar local Coptic churches in Orange County. As shown in Table 1, the overall average trip rate is 2.44 trips per 1,000 sq. ft. This overall average daily trip rate per 1,000 sq. ft. is considered a representative estimate for the proposed Saint Monica Coptic Orthodox Church project in Costa Mesa.

Table 1: Trip Generation Rate Summary

Church Site	Size TSF	Day	Daily Traffic Counts			Trip Rate Per 1,000 sq. ft.
			In	Out	Total	
St. Gregory	14.5	25-Jan-23	18	18	36	2.48
		23-Feb-23	17	17	34	2.34
St. Paul	27.0	25-Jan-23	51	52	103	3.81
		23-Feb-23	15	15	30	1.11
Overall Average Trip Rate (per 1,000 sq. ft.)						2.44

It should be noted that during our reasonableness review of the traffic counts, it was determined that the Saint Verena and the Three Holy Youth Coptic Orthodox Church site did not provide adequate representation of typical weekday church only trips due to the fact that the site includes a day care facility and trips destined for the day care facility used both the Walnut Avenue and Hewes Street entrance/exit driveways. Thus, we were not able to differentiate between day care and church trips entering/exiting the site from the Hewes Street driveway. As a result of this unforeseen condition, the Saint Verena and the Three Holy Youth Coptic Orthodox Church site was removed from further consideration because it did not meet the purpose of the study of identifying daily church only trips.

3.0 CONCLUSION

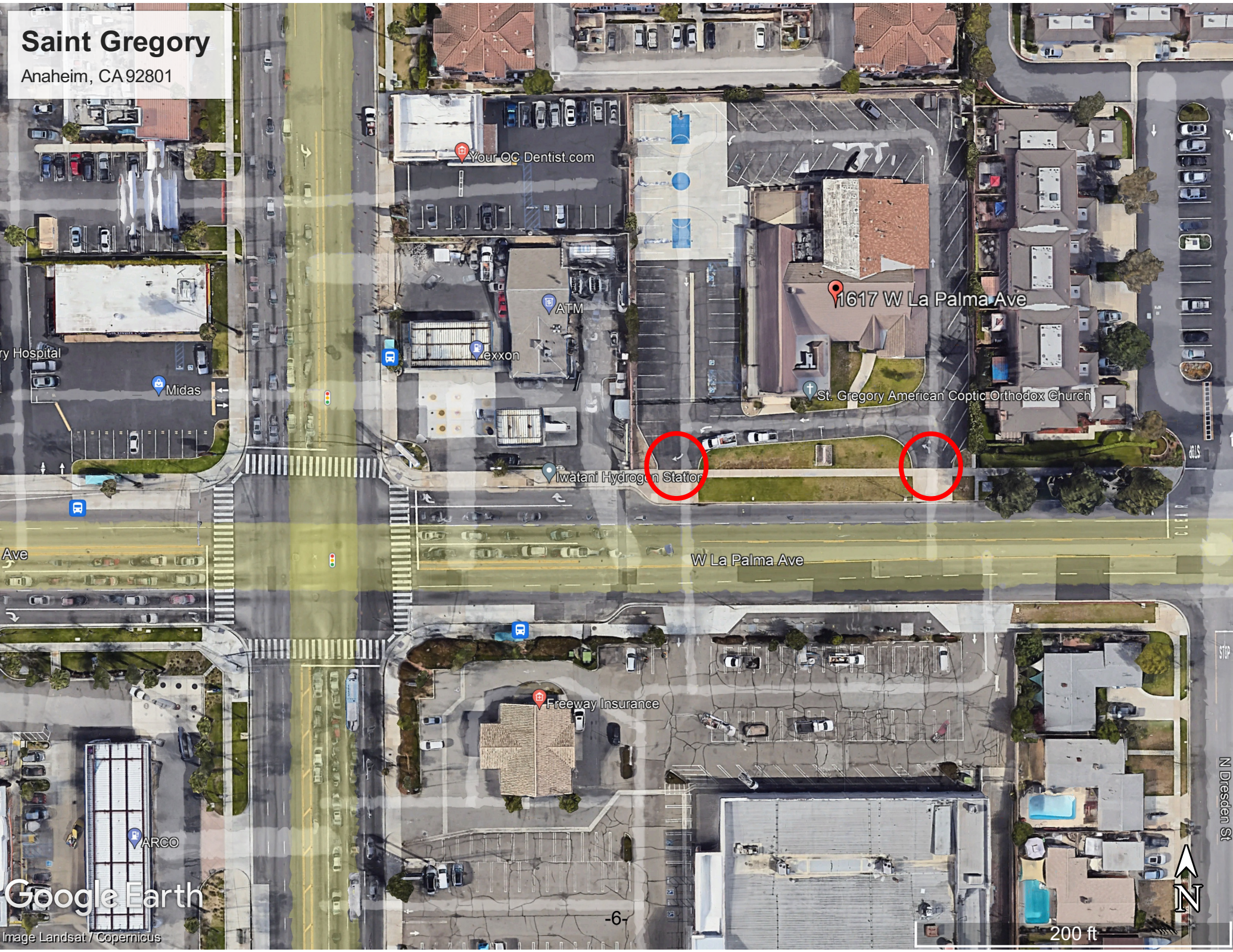
The results presented in Table 1 for this trip generation study, conclude that trip generation rates for local Orange County Coptic churches with similar characteristics as the proposed Saint Monica Coptic Orthodox Church in Costa Mesa, yield an overall average weekday daily trip rate of 2.44 trips per 1,000 sq. ft., which is significantly lower than the trip rate published in the ITE Trip Generation Manual for Land Use Code 560 (Churches).

4.0 APPENDIX

The church sites, driveway count locations, and manual daily traffic counts are presented in the attached Appendix.

Saint Gregory

Anaheim, CA 92801



ry Hospital

Midas

Your OC Dentist.com

ATM

Exxon

1617 W La Palma Ave

St. Gregory American Coptic Orthodox Church

Iwatani Hydrogen Station

W La Palma Ave

Freeway Insurance

Google Earth

Image Landsat / Copernicus

-6-

200 ft



N Dresden St

DRIVEWAY TRIP GENERATION COUNTS

CLIENT: INTUEOR CONSULTING INC
 PROJECT: COPTIC CHURCH TRIP GENERATION STUDY
 DATE: WEDNESDAY JANUARY 25, 2023
 LOCATION: SAINT GREGORY AMERICAN COPTIC ORTHODOX CHURCH

15 MIN COUNTS	DRIVEWAY							
	La Palma Ave - East Dwy			La Palma Ave - West Dwy			COMBINED TOTAL	
	IN	OUT		IN	OUT		IN	OUT
0000-0015	0	0		0	0		0	0
0015-0030	0	0		0	0		0	0
0030-0045	0	0		0	0		0	0
0045-0100	0	0		0	0		0	0
0100-0115	0	0		0	0		0	0
0115-0130	0	0		0	0		0	0
0130-0145	0	0		0	0		0	0
0145-0200	0	0		0	0		0	0
0200-0215	0	0		0	0		0	0
0215-0230	0	0		0	0		0	0
0230-0245	0	0		0	0		0	0
0245-0300	0	0		0	0		0	0
0300-0315	0	0		0	0		0	0
0315-0330	0	0		0	0		0	0
0330-0345	0	0		0	0		0	0
0345-0400	0	0		0	0		0	0
0400-0415	0	0		0	0		0	0
0415-0430	0	0		0	0		0	0
0430-0445	0	0		0	0		0	0
0445-0500	0	0		0	0		0	0
0500-0515	0	0		0	0		0	0
0515-0530	0	0		0	0		0	0
0530-0545	0	0		0	0		0	0
0545-0600	0	0		0	0		0	0
0600-0615	0	0		0	0		0	0
0615-0630	0	0		0	0		0	0
0630-0645	0	0		0	0		0	0
0645-0700	1	0		0	0		1	0
0700-0715	0	0		0	0		0	0
0715-0730	0	0		0	0		0	0
0730-0745	0	0		0	0		0	0
0745-0800	0	0		0	0		0	0
0800-0815	0	0		0	0		0	0
0815-0830	0	2		0	0		0	2
0830-0845	1	0		0	0		1	0
0845-0900	0	0		1	0		1	0
0900-0915	0	0		1	2		1	2
0915-0930	0	0		0	0		0	0
0930-0945	1	0		0	0		1	0
0945-1000	0	0		0	1		0	1
1000-1015	1	0		0	1		1	1
1015-1030	0	0		0	0		0	0
1030-1045	0	0		0	0		0	0
1045-1100	1	0		0	0		1	0
1100-1115	1	0		0	0		1	0
1115-1130	1	0		0	1		1	1
1130-1145	0	0		0	0		0	0
1145-1200	0	0		0	2		0	2

DRIVEWAY TRIP GENERATION COUNTS

CLIENT: INTUEOR CONSULTING INC
 PROJECT: COPTIC CHURCH TRIP GENERATION STUDY
 DATE: WEDNESDAY JANUARY 25, 2023
 LOCATION: SAINT GREGORY AMERICAN COPTIC ORTHODOX CHURCH

15 MIN COUNTS	DRIVEWAY							
	La Palma Ave - East Dwy			La Palma Ave - West Dwy			COMBINED TOTAL	
	IN	OUT		IN	OUT		IN	OUT
1200-1215	0	0		0	0		0	0
1215-1230	0	0		0	0		0	0
1230-1245	1	0		0	0		1	0
1245-1300	0	0		0	0		0	0
1300-1315	0	1		1	1		1	2
1315-1330	0	0		0	0		0	0
1330-1345	0	0		0	0		0	0
1345-1400	0	0		0	0		0	0
1400-1415	0	0		0	0		0	0
1415-1430	0	0		0	0		0	0
1430-1445	0	0		0	0		0	0
1445-1500	0	0		0	0		0	0
1500-1515	0	0		0	0		0	0
1515-1530	1	0		0	1		1	1
1530-1545	0	0		0	0		0	0
1545-1600	0	0		2	0		2	0
1600-1615	0	2		1	1		1	3
1615-1630	0	0		0	0		0	0
1630-1645	0	0		0	0		0	0
1645-1700	0	0		0	0		0	0
1700-1715	0	0		0	0		0	0
1715-1730	1	0		0	1		1	1
1730-1745	0	0		0	0		0	0
1745-1800	1	1		0	0		1	1
1800-1815	1	0		0	1		1	1
1815-1830	0	0		0	0		0	0
1830-1845	0	0		0	0		0	0
1845-1900	0	0		0	0		0	0
1900-1915	0	0		0	0		0	0
1915-1930	0	0		0	0		0	0
1930-1945	0	0		0	0		0	0
1945-2000	0	0		0	0		0	0
2000-2015	0	0		0	0		0	0
2015-2030	0	0		0	0		0	0
2030-2045	0	0		0	0		0	0
2045-2100	0	0		0	0		0	0
2100-2115	0	0		0	0		0	0
2115-2130	0	0		0	0		0	0
2130-2145	0	0		0	0		0	0
2145-2200	0	0		0	0		0	0
2200-2215	0	0		0	0		0	0
2215-2230	0	0		0	0		0	0
2230-2245	0	0		0	0		0	0
2245-2300	0	0		0	0		0	0
2300-2315	0	0		0	0		0	0
2315-2330	0	0		0	0		0	0
2330-2345	0	0		0	0		0	0
2345-2400	0	0		0	0		0	0
Daily Totals	12	6		6	12		18	18

DRIVEWAY TRIP GENERATION COUNTS

CLIENT: INTUEOR CONSULTING INC
 PROJECT: COPTIC CHURCH TRIP GENERATION STUDY
 DATE: THURSDAY FEBRUARY 23, 2023
 LOCATION: SAINT GREGORY AMERICAN COPTIC ORTHODOX CHURCH

15 MIN COUNTS	DRIVEWAY							
	La Palma Ave - East Dwy			La Palma Ave - West Dwy			COMBINED TOTAL	
	IN	OUT		IN	OUT		IN	OUT
0000-0015	0	0		0	0		0	0
0015-0030	0	0		0	0		0	0
0030-0045	0	0		0	0		0	0
0045-0100	0	0		0	0		0	0
0100-0115	0	0		0	0		0	0
0115-0130	0	0		0	0		0	0
0130-0145	0	0		0	0		0	0
0145-0200	0	0		0	0		0	0
0200-0215	0	0		0	0		0	0
0215-0230	0	0		0	0		0	0
0230-0245	0	0		0	0		0	0
0245-0300	0	0		0	0		0	0
0300-0315	0	0		0	0		0	0
0315-0330	0	0		0	0		0	0
0330-0345	0	0		0	0		0	0
0345-0400	0	0		0	0		0	0
0400-0415	0	0		0	0		0	0
0415-0430	0	0		0	0		0	0
0430-0445	0	0		0	0		0	0
0445-0500	0	0		0	0		0	0
0500-0515	0	0		0	0		0	0
0515-0530	0	0		0	0		0	0
0530-0545	0	0		0	0		0	0
0545-0600	0	0		0	0		0	0
0600-0615	0	0		0	0		0	0
0615-0630	0	0		0	0		0	0
0630-0645	0	0		0	0		0	0
0645-0700	0	0		0	0		0	0
0700-0715	0	0		0	0		0	0
0715-0730	1	0		0	0		1	0
0730-0745	0	0		0	0		0	0
0745-0800	1	0		0	1		1	1
0800-0815	0	0		0	0		0	0
0815-0830	0	0		0	0		0	0
0830-0845	0	0		0	0		0	0
0845-0900	1	0		0	1		1	1
0900-0915	1	0		0	0		1	0
0915-0930	0	0		0	0		0	0
0930-0945	0	0		0	0		0	0
0945-1000	0	0		0	0		0	0
1000-1015	0	0		0	0		0	0
1015-1030	1	0		0	0		1	0
1030-1045	0	0		0	0		0	0
1045-1100	0	0		0	0		0	0
1100-1115	0	0		0	0		0	0
1115-1130	0	0		0	0		0	0
1130-1145	1	0		0	0		1	0
1145-1200	1	0		0	0		1	0

DRIVEWAY TRIP GENERATION COUNTS

CLIENT: INTUEOR CONSULTING INC
 PROJECT: COPTIC CHURCH TRIP GENERATION STUDY
 DATE: THURSDAY FEBRUARY 23, 2023
 LOCATION: SAINT GREGORY AMERICAN COPTIC ORTHODOX CHURCH

15 MIN COUNTS	DRIVEWAY							
	La Palma Ave - East Dwy			La Palma Ave - West Dwy			COMBINED TOTAL	
	IN	OUT		IN	OUT		IN	OUT
1200-1215	1	0		0	2		1	2
1215-1230	0	0		0	0		0	0
1230-1245	0	0		0	0		0	0
1245-1300	0	1		1	0		1	1
1300-1315	0	0		0	1		0	1
1315-1330	0	0		0	0		0	0
1330-1345	0	0		0	0		0	0
1345-1400	0	0		0	0		0	0
1400-1415	0	0		0	0		0	0
1415-1430	0	0		0	0		0	0
1430-1445	0	0		0	0		0	0
1445-1500	1	0		0	1		1	1
1500-1515	0	0		0	0		0	0
1515-1530	0	0		0	0		0	0
1530-1545	0	0		0	0		0	0
1545-1600	1	0		0	2		1	2
1600-1615	0	0		0	0		0	0
1615-1630	1	0		0	1		1	1
1630-1645	0	0		0	1		0	1
1645-1700	1	0		0	0		1	0
1700-1715	0	0		0	1		0	1
1715-1730	0	0		0	1		0	1
1730-1745	0	0		0	0		0	0
1745-1800	0	0		0	0		0	0
1800-1815	0	0		0	0		0	0
1815-1830	0	0		0	0		0	0
1830-1845	0	0		0	0		0	0
1845-1900	0	0		0	0		0	0
1900-1915	0	0		0	0		0	0
1915-1930	1	0		0	0		1	0
1930-1945	3	0		0	0		3	0
1945-2000	0	0		0	0		0	0
2000-2015	0	0		0	0		0	0
2015-2030	0	0		0	0		0	0
2030-2045	0	0		0	0		0	0
2045-2100	0	0		0	0		0	0
2100-2115	0	0		0	0		0	0
2115-2130	0	0		0	0		0	0
2130-2145	0	1		0	3		0	4
2145-2200	0	0		0	0		0	0
2200-2215	0	0		0	0		0	0
2215-2230	0	0		0	0		0	0
2230-2245	0	0		0	0		0	0
2245-2300	0	0		0	0		0	0
2300-2315	0	0		0	0		0	0
2315-2330	0	0		0	0		0	0
2330-2345	0	0		0	0		0	0
2345-2400	0	0		0	0		0	0
Daily Totals	16	2		1	15		17	17

Saint Paul

Irvine, CA 92612

Lutron Electronics Training Center

Inet Realty and School

TCA Architects

HPA, Inc

Hill Dennis

Golden Age Companions

St. John Henry Newman Catholic Church

Bardeen Ave

Dupont Dr

Dupont Dr

Bardeen Ave

18802 Bardeen Ave

St. Paul American Coptic Orthodox Church

Teller Ave

Level's Detailing

Google Earth

Image Landsat / Copernicus

-11-

300 ft



DRIVEWAY TRIP GENERATION COUNTS

CLIENT: INTUEOR CONSULTING INC
 PROJECT: COPTIC CHURCH TRIP GENERATION STUDY
 DATE: WEDNESDAY JANUARY 25, 2023
 LOCATION: SAINT PAUL AMERICAN COPTIC ORTHODOX CHURCH

15 MIN COUNTS	DRIVEWAY							
	Bardeen Ave - South Dwy			Bardeen Ave - North Dwy			COMBINED TOTAL	
	IN	OUT		IN	OUT		IN	OUT
0000-0015	0	0		0	0		0	0
0015-0030	0	0		0	0		0	0
0030-0045	0	0		0	0		0	0
0045-0100	0	0		0	0		0	0
0100-0115	0	0		0	0		0	0
0115-0130	0	0		0	0		0	0
0130-0145	0	0		0	0		0	0
0145-0200	0	0		0	0		0	0
0200-0215	0	0		0	0		0	0
0215-0230	0	0		0	0		0	0
0230-0245	0	0		0	0		0	0
0245-0300	0	0		0	0		0	0
0300-0315	0	0		0	0		0	0
0315-0330	0	0		0	0		0	0
0330-0345	0	0		0	0		0	0
0345-0400	0	0		0	0		0	0
0400-0415	0	0		0	0		0	0
0415-0430	0	0		0	0		0	0
0430-0445	0	0		0	0		0	0
0445-0500	0	0		0	0		0	0
0500-0515	0	0		0	0		0	0
0515-0530	0	0		0	0		0	0
0530-0545	0	0		0	0		0	0
0545-0600	0	0		0	0		0	0
0600-0615	0	0		0	0		0	0
0615-0630	0	0		0	0		0	0
0630-0645	0	0		0	0		0	0
0645-0700	0	0		1	0		1	0
0700-0715	0	0		1	1		1	1
0715-0730	0	0		1	0		1	0
0730-0745	0	0		0	0		0	0
0745-0800	0	0		0	0		0	0
0800-0815	0	0		0	0		0	0
0815-0830	0	0		2	0		2	0
0830-0845	0	0		2	1		2	1
0845-0900	0	0		4	0		4	0
0900-0915	0	0		2	1		2	1
0915-0930	0	0		3	0		3	0
0930-0945	1	0		1	0		2	0
0945-1000	3	1		0	0		3	1
1000-1015	0	0		2	1		2	1
1015-1030	0	2		1	0		1	2
1030-1045	1	0		0	0		1	0
1045-1100	1	2		0	7		1	9
1100-1115	0	1		0	0		0	1
1115-1130	0	1		2	1		2	2
1130-1145	0	0		0	0		0	0
1145-1200	1	1		0	0		1	1

DRIVEWAY TRIP GENERATION COUNTS

CLIENT: INTUEOR CONSULTING INC
 PROJECT: COPTIC CHURCH TRIP GENERATION STUDY
 DATE: WEDNESDAY JANUARY 25, 2023
 LOCATION: SAINT PAUL AMERICAN COPTIC ORTHODOX CHURCH

15 MIN COUNTS	DRIVEWAY							
	Bardeen Ave - South Dwy			Bardeen Ave - North Dwy			COMBINED TOTAL	
	IN	OUT		IN	OUT		IN	OUT
1200-1215	0	1		1	1		1	2
1215-1230	1	1		0	1		1	2
1230-1245	1	0		1	1		2	1
1245-1300	0	1		0	4		0	5
1300-1315	1	0		0	2		1	2
1315-1330	0	0		0	0		0	0
1330-1345	1	0		1	1		2	1
1345-1400	0	0		0	1		0	1
1400-1415	0	0		0	0		0	0
1415-1430	0	0		0	0		0	0
1430-1445	0	0		0	1		0	1
1445-1500	0	0		0	0		0	0
1500-1515	1	0		0	0		1	0
1515-1530	0	0		0	1		0	1
1530-1545	0	0		0	0		0	0
1545-1600	0	0		0	1		0	1
1600-1615	0	0		0	1		0	1
1615-1630	0	0		0	0		0	0
1630-1645	0	0		0	0		0	0
1645-1700	0	0		0	0		0	0
1700-1715	0	0		0	0		0	0
1715-1730	0	0		0	0		0	0
1730-1745	0	0		0	0		0	0
1745-1800	0	0		0	0		0	0
1800-1815	0	0		0	0		0	0
1815-1830	0	0		0	0		0	0
1830-1845	0	0		0	0		0	0
1845-1900	0	0		1	0		1	0
1900-1915	2	0		0	0		2	0
1915-1930	3	0		2	1		5	1
1930-1945	1	0		2	0		3	0
1945-2000	2	0		0	0		2	0
2000-2015	0	0		0	0		0	0
2015-2030	1	0		0	0		1	0
2030-2045	0	0		0	0		0	0
2045-2100	0	0		0	4		0	4
2100-2115	0	6		0	3		0	9
2115-2130	0	0		0	0		0	0
2130-2145	0	0		0	0		0	0
2145-2200	0	0		0	0		0	0
2200-2215	0	0		0	0		0	0
2215-2230	0	0		0	0		0	0
2230-2245	0	0		0	0		0	0
2245-2300	0	0		0	0		0	0
2300-2315	0	0		0	0		0	0
2315-2330	0	0		0	0		0	0
2330-2345	0	0		0	0		0	0
2345-2400	0	0		0	0		0	0
Daily Totals	21	17		30	35		51	52

DRIVEWAY TRIP GENERATION COUNTS

CLIENT: INTUEOR CONSULTING INC
 PROJECT: COPTIC CHURCH TRIP GENERATION STUDY
 DATE: THURSDAY FEBRUARY 23, 2023
 LOCATION: SAINT PAUL AMERICAN COPTIC ORTHODOX CHURCH

15 MIN COUNTS	DRIVEWAY							
	Bardeen Ave - South Dwy			Bardeen Ave - North Dwy			COMBINED TOTAL	
	IN	OUT		IN	OUT		IN	OUT
0000-0015	0	0		0	0		0	0
0015-0030	0	0		0	0		0	0
0030-0045	0	0		0	0		0	0
0045-0100	0	0		0	0		0	0
0100-0115	0	0		0	0		0	0
0115-0130	0	0		0	0		0	0
0130-0145	0	0		0	0		0	0
0145-0200	0	0		0	0		0	0
0200-0215	0	0		0	0		0	0
0215-0230	0	0		0	0		0	0
0230-0245	0	0		0	0		0	0
0245-0300	0	0		0	0		0	0
0300-0315	0	0		0	0		0	0
0315-0330	0	0		0	0		0	0
0330-0345	0	0		0	0		0	0
0345-0400	0	0		0	0		0	0
0400-0415	0	0		0	0		0	0
0415-0430	0	0		0	0		0	0
0430-0445	0	0		0	0		0	0
0445-0500	0	0		0	0		0	0
0500-0515	0	0		0	0		0	0
0515-0530	0	0		0	0		0	0
0530-0545	0	0		0	0		0	0
0545-0600	0	0		0	0		0	0
0600-0615	0	0		0	0		0	0
0615-0630	0	0		0	0		0	0
0630-0645	0	0		0	0		0	0
0645-0700	0	0		0	0		0	0
0700-0715	0	0		0	0		0	0
0715-0730	0	0		0	0		0	0
0730-0745	0	0		0	0		0	0
0745-0800	0	0		0	0		0	0
0800-0815	0	0		0	0		0	0
0815-0830	0	0		0	0		0	0
0830-0845	0	0		0	0		0	0
0845-0900	1	0		0	0		1	0
0900-0915	0	0		0	0		0	0
0915-0930	0	0		0	0		0	0
0930-0945	0	0		0	0		0	0
0945-1000	0	0		1	0		1	0
1000-1015	0	1		0	0		0	1
1015-1030	0	0		0	0		0	0
1030-1045	0	0		0	0		0	0
1045-1100	0	0		0	0		0	0
1100-1115	0	1		2	1		2	2
1115-1130	0	0		0	0		0	0
1130-1145	1	1		1	0		2	1
1145-1200	0	0		1	0		1	0

DRIVEWAY TRIP GENERATION COUNTS

CLIENT: INTUEOR CONSULTING INC
 PROJECT: COPTIC CHURCH TRIP GENERATION STUDY
 DATE: THURSDAY FEBRUARY 23, 2023
 LOCATION: SAINT PAUL AMERICAN COPTIC ORTHODOX CHURCH

15 MIN COUNTS	DRIVEWAY							
	Bardeen Ave - South Dwy			Bardeen Ave - North Dwy			COMBINED TOTAL	
	IN	OUT		IN	OUT		IN	OUT
1200-1215	0	0		0	0		0	0
1215-1230	0	0		0	2		0	2
1230-1245	0	1		2	0		2	1
1245-1300	0	0		0	0		0	0
1300-1315	0	1		0	0		0	1
1315-1330	0	0		0	0		0	0
1330-1345	0	0		0	0		0	0
1345-1400	0	0		0	0		0	0
1400-1415	0	0		0	0		0	0
1415-1430	0	0		0	0		0	0
1430-1445	0	1		1	0		1	1
1445-1500	0	0		0	0		0	0
1500-1515	0	0		0	0		0	0
1515-1530	0	0		0	0		0	0
1530-1545	0	0		0	0		0	0
1545-1600	0	0		0	0		0	0
1600-1615	2	1		0	0		2	1
1615-1630	0	0		1	1		1	1
1630-1645	0	0		0	0		0	0
1645-1700	0	0		0	0		0	0
1700-1715	0	0		0	1		0	1
1715-1730	0	0		0	0		0	0
1730-1745	0	0		0	1		0	1
1745-1800	0	0		1	1		1	1
1800-1815	0	0		0	0		0	0
1815-1830	0	0		0	0		0	0
1830-1845	0	0		0	0		0	0
1845-1900	0	0		0	0		0	0
1900-1915	0	0		0	0		0	0
1915-1930	0	0		0	0		0	0
1930-1945	0	0		0	0		0	0
1945-2000	0	0		0	0		0	0
2000-2015	0	0		0	0		0	0
2015-2030	0	0		0	0		0	0
2030-2045	0	0		0	0		0	0
2045-2100	0	0		1	1		1	1
2100-2115	0	0		0	0		0	0
2115-2130	0	0		0	0		0	0
2130-2145	0	0		0	0		0	0
2145-2200	0	0		0	0		0	0
2200-2215	0	0		0	0		0	0
2215-2230	0	0		0	0		0	0
2230-2245	0	0		0	0		0	0
2245-2300	0	0		0	0		0	0
2300-2315	0	0		0	0		0	0
2315-2330	0	0		0	0		0	0
2330-2345	0	0		0	0		0	0
2345-2400	0	0		0	0		0	0
Daily Totals	4	7		11	8		15	15