

---

**From:** Roberto Herrera <parksandreccommissioner@gmail.com>  
**Sent:** Tuesday, June 10, 2025 11:31 AM  
**To:** PACS Comments; CITY CLERK  
**Subject:** Public Comment: Parks & Community Services Commission  
**Attachments:** Public Comment 610\_RobertoHerrera.pdf

Hello City of Costa Mesa Parks & Community Services Commission,

I write as the Chair of the City of Santa Ana's Parks, Recreation & Community Services Commission.

I am including in this email a presentation to be displayed during my public comments for today's commission meeting regarding Park Capital Improvements Principle and Values Workshop.

I am also including our 2022 City of Santa Ana Parks Master Plan.

<https://www.santa-ana.org/parks-master-plan/>

--

**Roberto Herrera**

Pronouns (They/Them/Theirs)

*Ward 3 Parks and Recreation Commissioner*

**City of Santa Ana**

<https://www.santa-ana.org/departments/parks-recreation/>

---

**CAUTION:** This email originated from outside of the organization. Do not click links or open attachments unless you recognize the sender and know the content is safe. Report any suspicious activities to the Information Technology Department.

---

# **PUBLIC COMMENT RE: PARK CAPITAL IMPROVEMENTS PRINCIPLE AND VALUES WORKSHOP**

June 10<sup>th</sup>, 2025

**Roberto Herrera, Chair of the City of  
Santa Ana's Parks, Recreation and  
Community Services Commission**

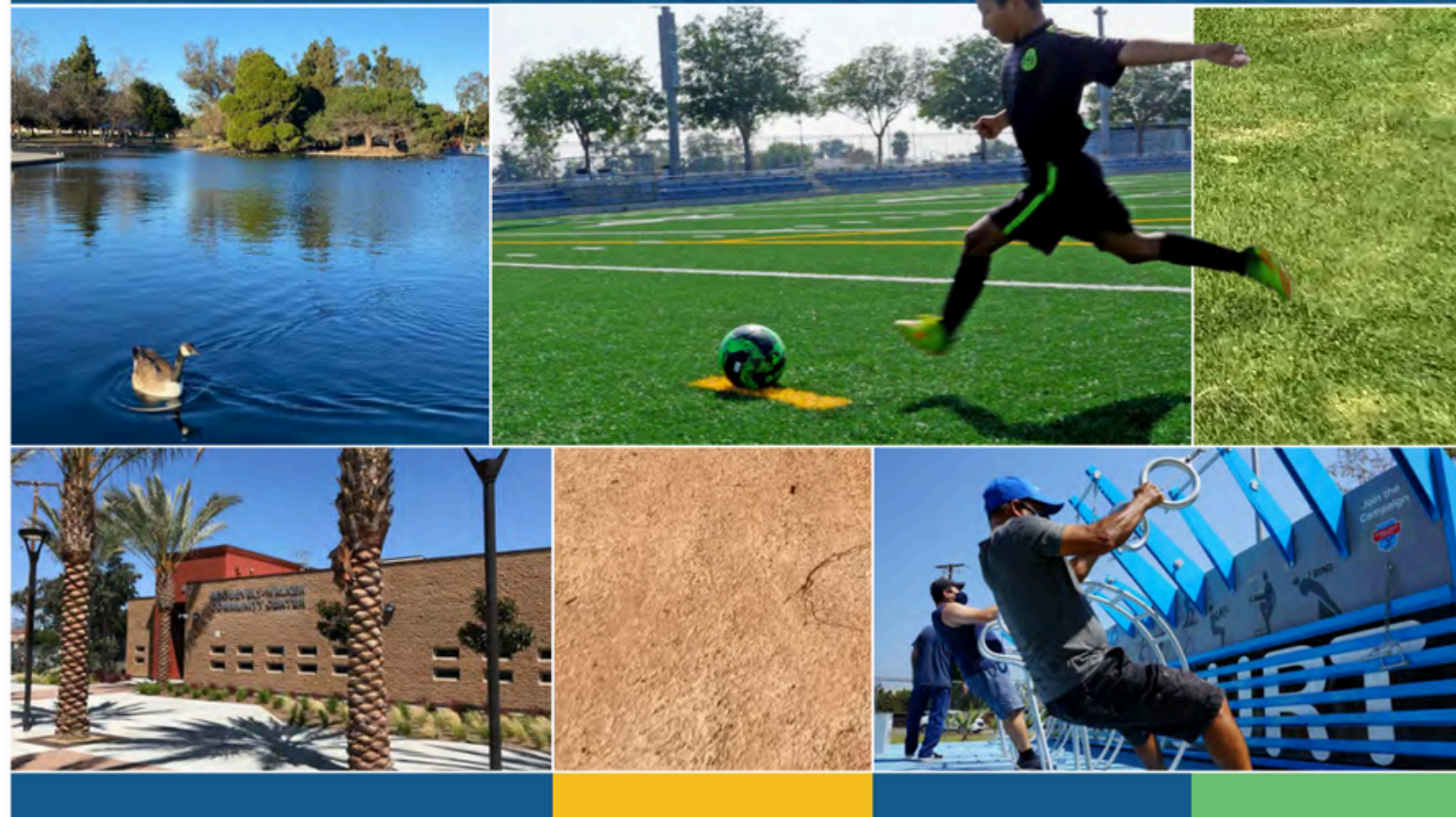






# PARKS MASTER PLAN

Santa Ana Parks, Facilities,  
Trails & Open Space



On May 17, 2022, the City of Santa Ana's adopted its first Parks Master Plan. The PMP is a long-range plan, identifying eight key initiatives along with policies and implementation strategies that will **guide the investment** of parks, recreation, and related services **over the next ten years.**

# Park Access

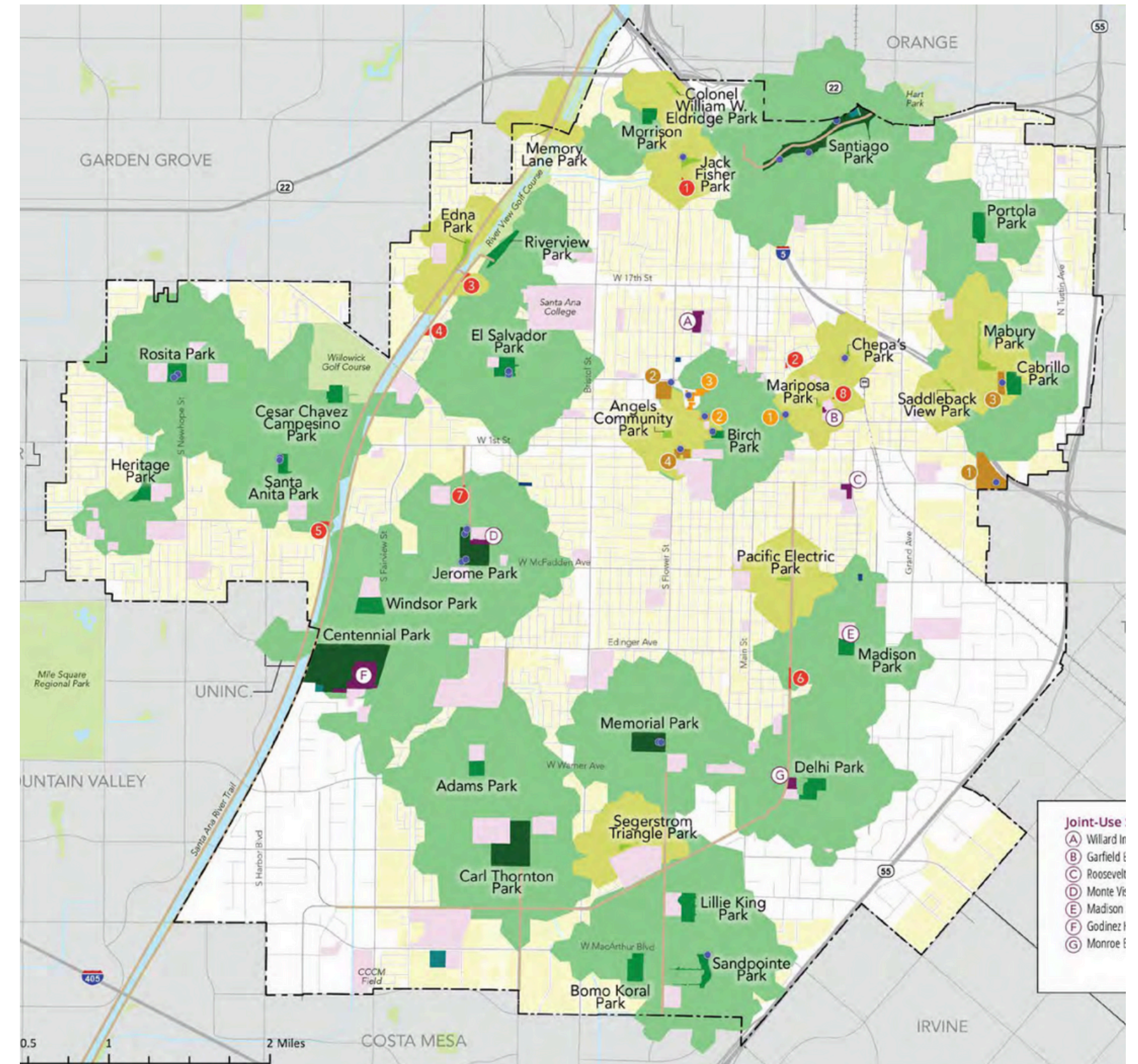
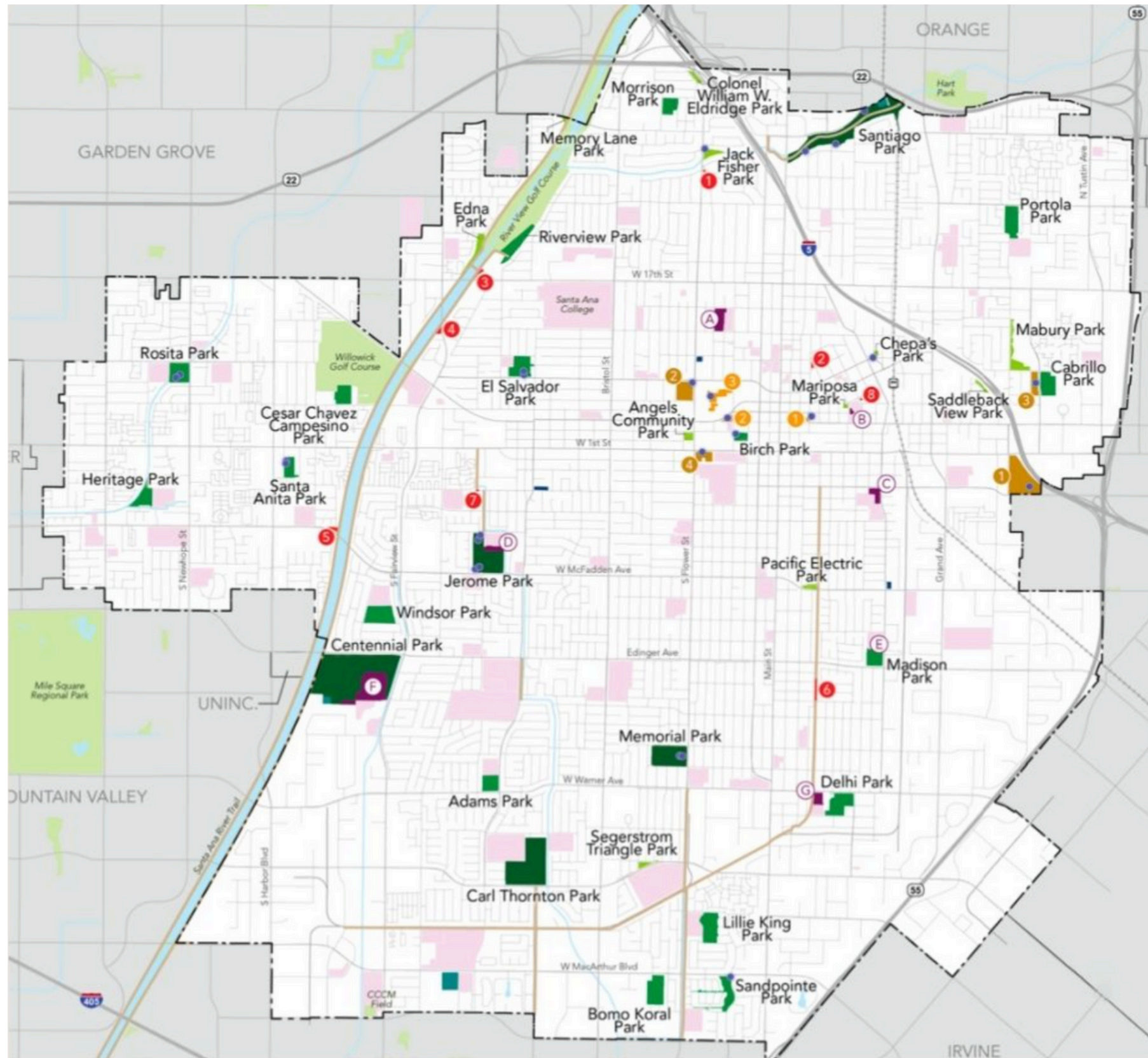
The National Recreation and Park Association (NRPA) and the Trust for Public Land (TPL) have championed the industry standard of providing parks within **a 10-minute walk** (or 1/2 mile) of all residents. This distance is typically the farthest Americans will walk on average reach a destination.

# Park Equity

- **Environmental Justice** Communities
- Living Below the **Poverty Level**
- **Race**/Communities of Color
- Projected Residential Unit **Density**

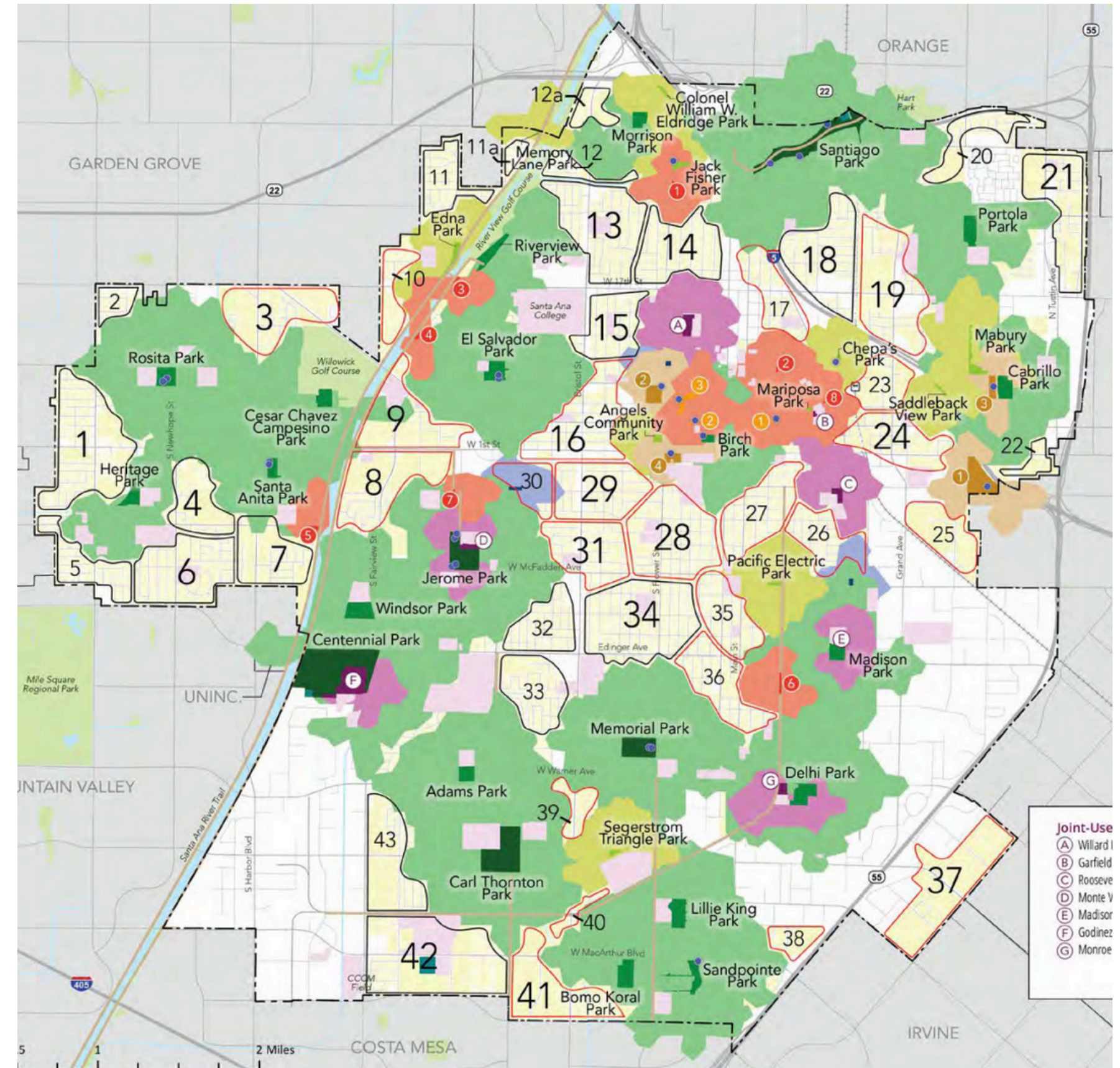
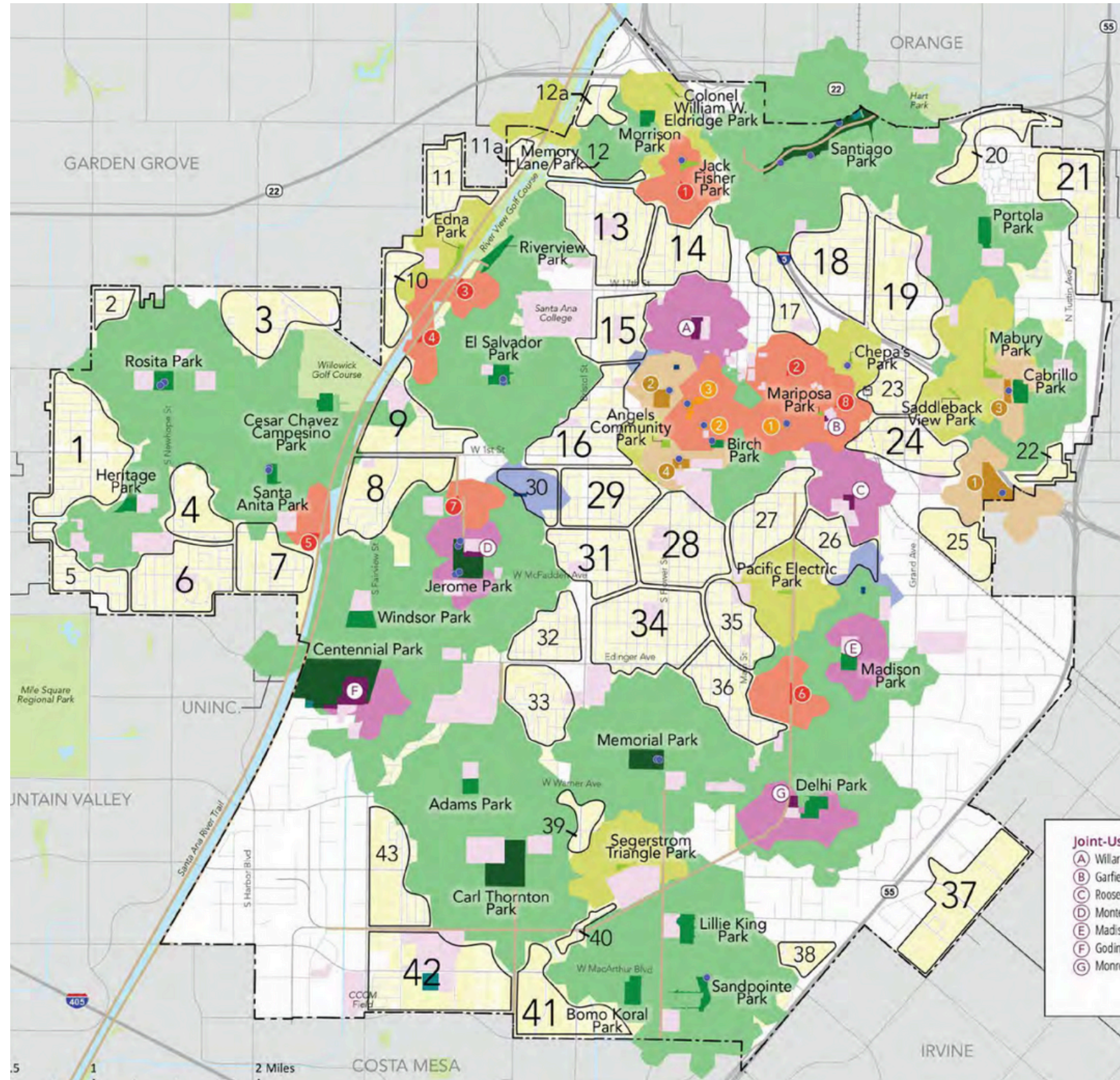


# Park Access





# Park Equity





## In Summary . . .

A park access analysis is not enough to capture the need in the community for more parkland and capital improvement projects. **Prioritizing a park equity analysis** will give better insight to where investments are needed and should be prioritized.

---

**From:** OCHOA, ALISA  
**Sent:** Wednesday, June 11, 2025 4:56 PM  
**To:** PACS Comments  
**Subject:** Public Comment on Brentwood Park Improvements

Dear PACS Members,

Thank you to PACS, City Council, and all the dedicated neighbors who have continued to advocate for improvements to Brentwood Park.

Though my son has now outgrown the park, I remain hopeful that it will soon be upgraded to better serve today's families and future generations. These improvements have been needed for quite some time, and I applaud everyone's persistence and collaboration in moving this project toward the finish line.

As part of the upgrades, I encourage the City to consider incorporating opportunities for public art that reflect the character of the neighborhood and invite community engagement. One of my favorite unexpected delights near the park is Becky Feltman's pet mural on Monte Vista. It shows how art can enliven a space and foster connection.

Even small additions—such as a tile mural created by local children, or sidewalk poetry stamped into the newly poured pathways—can create lasting impact at relatively low cost. Public art offers moments of joy, reflection, and even learning. I know firsthand how small, everyday moments—like reading traffic signs—helped reinforce my son's early reading skills. Art in the park can do the same, enriching the experience for visitors of all ages.

Thank you again to everyone working so hard to make this long-awaited project a reality!

Sincerely,  
Alisa Ochoa  
District 6 Resident  
Chair, Arts Commission

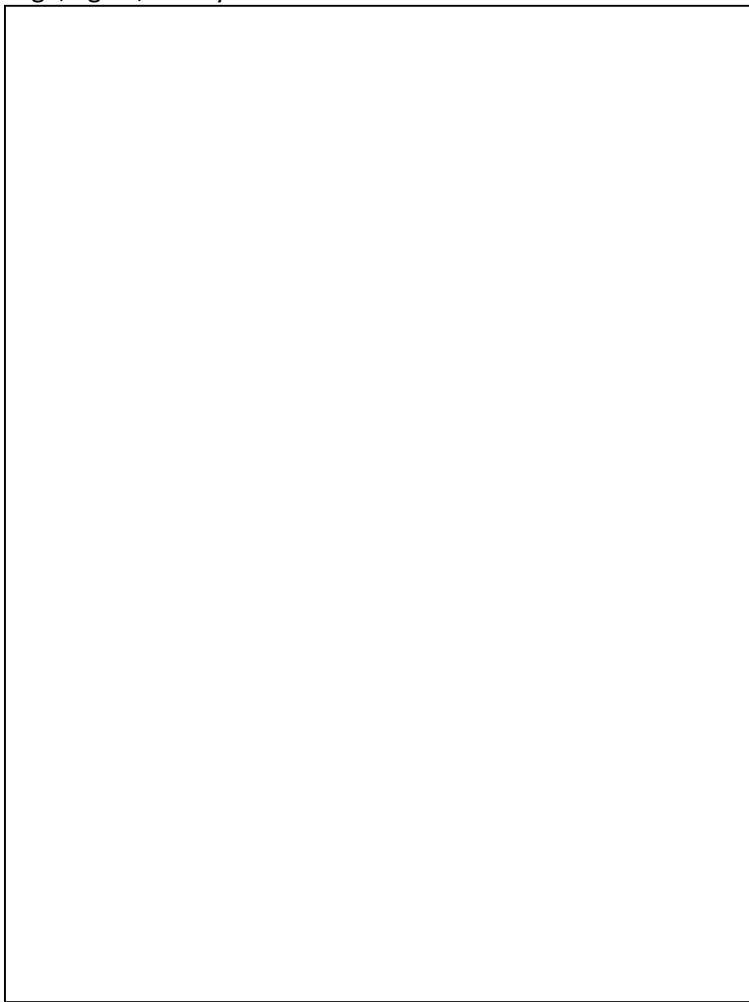


---

**From:** Brentwood Park Alliance <brentwoodparkaction@gmail.com>  
**Sent:** Thursday, June 12, 2025 7:52 AM  
**To:** FAUTUA, LAURA; PACS Comments  
**Subject:** Photo and Videos for PACS Mtg  
**Attachments:** recorded-1687548844749.mov; recorded-1661584537983.MOV

To be shown at PACS meeting

Sage, age 4, at City Hall



Toddlers on Volleyball Net

---

**CAUTION:** This email originated from outside of the organization. Do not click links or open attachments unless you recognize the sender and know the content is safe. Report any suspicious activities to the Information Technology Department.

---

---

**From:** Brentwood Park Alliance <brentwoodparkaction@gmail.com>  
**Sent:** Thursday, June 12, 2025 9:11 AM  
**To:** PACS Comments; FAUTUA, LAURA  
**Subject:** Photos and video for Amy M. for PACS mtg  
**Attachments:** IMG\_1231-2.MOV

## Photo #1 - Park Seating



## Photos #2 #3 #4 - Picnic Table













3/3





Photo #5 - Aerial view Map of Density



Photo #6 -



Yard