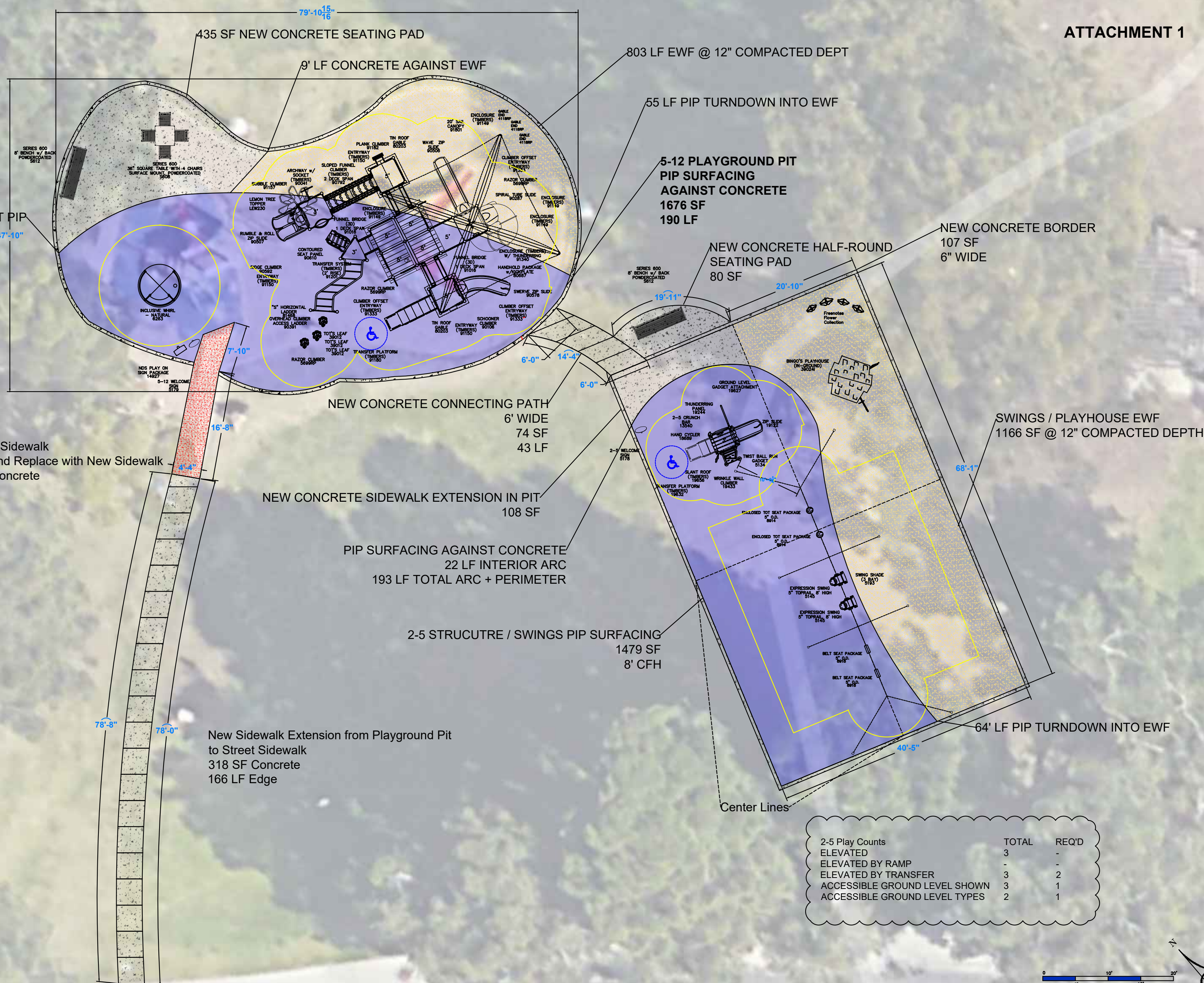


| | | |
|-------------------------------|-------|-------|
| 5-12 Play Counts | TOTAL | REQ'D |
| ELEVATED | 12 | - |
| ELEVATED BY RAMP | - | - |
| ELEVATED BY TRANSFER | 12 | 6 |
| ACCESSIBLE GROUND LEVEL SHOWN | 6 | 5 |
| ACCESSIBLE GROUND LEVEL TYPES | 4 | 3 |



| 2-5 Play Counts | TOTAL | REQ'D |
|-------------------------------|-------|-------|
| ELEVATED | 3 | - |
| ELEVATED BY RAMP | - | - |
| ELEVATED BY TRANSFER | 3 | 2 |
| ACCESSIBLE GROUND LEVEL SHOWN | 3 | 1 |
| ACCESSIBLE GROUND LEVEL TYPES | 2 | 1 |



City of Costa Mesa
Brentwood Park Playground Opt6
Costa Mesa, CA
Representative
Great Western Recreation

SALES REP
KJ LeCESNE
619-876-6623
KJ@GWPARK.COM

| | | | |
|---|---|----------|---|
| Total Elevated Play Components | - | | |
| Total Elevated Play Components Accessible By Ramp | - | Required | - |
| Total Elevated Components Accessible By Transfer | - | Required | - |
| Total Accessible Ground Level Components Shown | - | Required | - |
| Total Different Types Of Ground Level Components | - | Required | - |

This play equipment is recommended for children ages 2-5/5-12

Minimum Area Required:

Scale: -

This drawing can be scaled only when in an 18" x 24" format

IMPORTANT: Soft resilient surfacing should be placed in the use zones of all equipment, as specified for each type of equipment, and at depths to meet the critical fall heights as specified by the U.S. consumer Product Safety Commission, ASTM standard F 1487 and Canadian Standard CAN/CSA-Z-614

Drawn By:
KD

Date:
6/4/2025

Drawing Name:
109981-01-Opt 6

